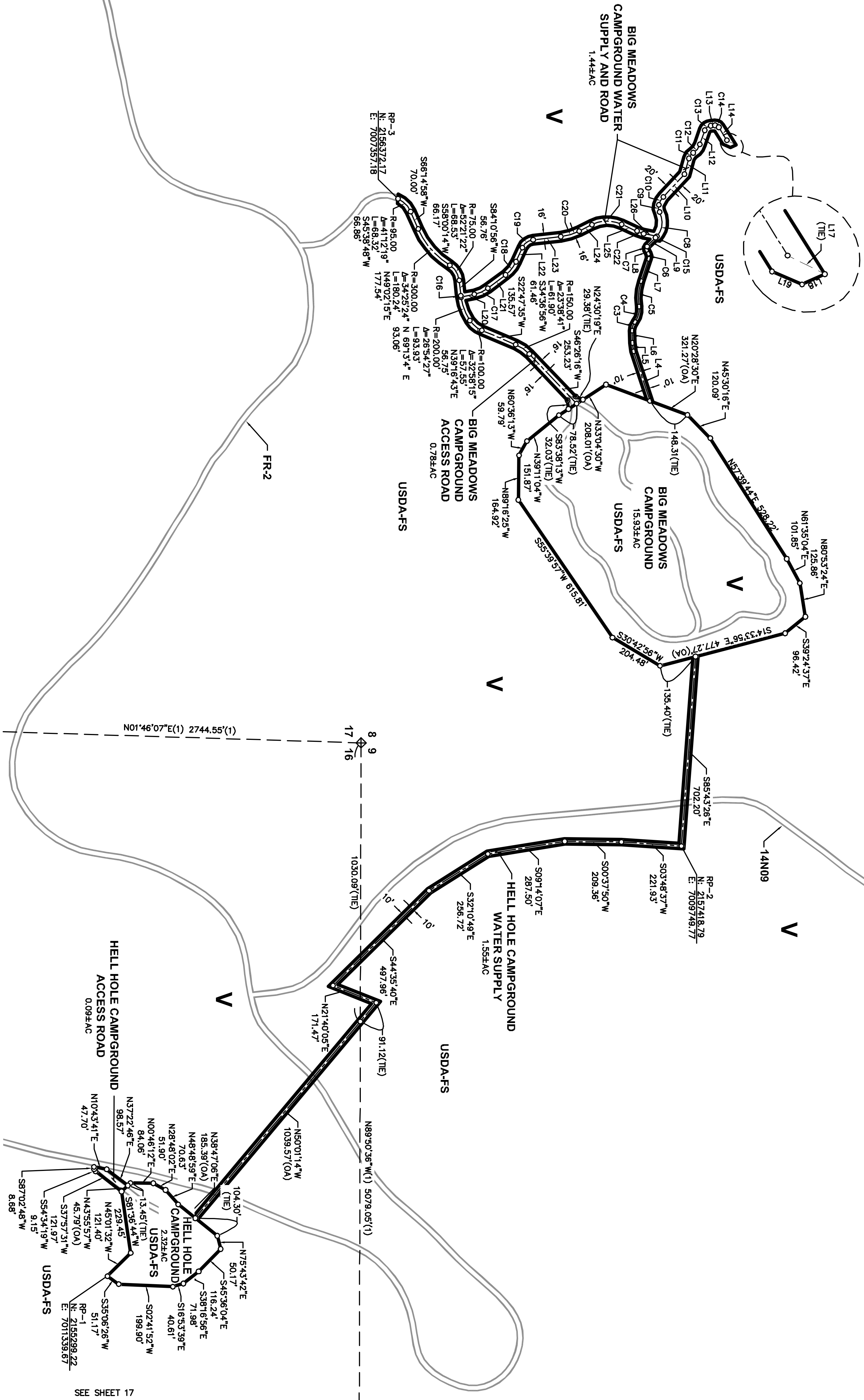


CURVE TABULATION			
NO.	DELTA	BEARING	DIST.
C3	50.00	38.14.00"	34.24'
C4	75.00	46.34.39"	60.97'
C5	200.00	27.07.09"	94.66'
C6	25.00	48.15.35"	20.18'
C7	12.50	73.11.25"	15.97'
C8	80.00	69.31.55"	95.06'
C9	150.00	51.13.13"	111.13'
C10	75.00	26.22.14"	34.52'
C11	35.00	43.40.43"	28.68'
C12	55.00	42.02.17"	40.35'
C13	25.00	68.21.26"	28.95'
C14	15.00	62.37.38"	16.40'
C15	80.00	04.36.14"	6.99'
C16	20.00	04.36.14"	6.99'
C17	125.00	25.19.04"	55.23'
C18	125.00	28.44.13"	62.69'
C19	50.00	59.11.45"	51.66'
C20	200.00	20.15.07"	70.69'
C21	125.00	52.07.48"	113.73'
C22	100.00	14.34.10"	25.43'

LINE TABULATION			
NO.	BEARING	DIST.	
L4	N71°52.43'E	192.58'	
L5	N81°19.56'E	31.94'	
L6	N88°45.11'E	45.17'	
L7	N71°28.19'W	87.40'	
L8	N62°16.08'E	14.67'	
L9	N44°02.29'W	14.08'	
L10	N32°52.29'W	11.82'	
L11	N74°21.53'W	60.42'	
L12	N70°50.25'W	55.50'	
L13	N04°30.48'W	16.31'	
L14	N58°08.53'E	56.43'	
L15	S31°53.07'E	24.50'	
L16	S31°53.07'E	8.73'	
L17	S31°53.07'E	8.73'	
L18	N24°26.38'W	19.82'	
L19	N23°29.53'E	21.25'	
L20	S11°41.20'E	50.27'	
L21	S37°00.24'E	81.90'	
L22	S65°44.37'E	57.10'	
L23	S08°32.52'E	102.99'	
L24	S28°19.49'W	82.98'	
L25	S10°45.39'W	49.85'	
L26	S10°45.39'W	49.85'	



**SURVEYOR'S STATEMENT**

I CERTIFY THAT I SUPERVISED THE SURVEY OF THE PROJECT LANDS, THAT THE PROJECT BOUNDARY DELINEATION FOR THE MIDDLE FORK AMERICAN RIVER PROJECT AS SHOWN ON THIS EXHIBIT IS BASED ON THE SURVEY DATA AND CALCULATIONS OF THE SURVEYOR, AND THAT THE SURVEYOR HAS REVIEWED THE EXHIBIT AND THE GEOGRAPHIC LOCATION THIS EXHIBIT IS BASED UPON LIES OF THE EXHIBIT "K" OF THE MIDDLE FORK AMERICAN RIVER PROJECT NO.2079 AND BOOK 2 SURVEY'S PAGE 78 OFFICIAL RECORDS OF PLACER COUNTY AND CORRECTLY SHOWN HEREON. SEE CONTROL SCHEME FOR DETAILS OF THE BOUNDARY DELINEATION AND DATA ACQUISITION.

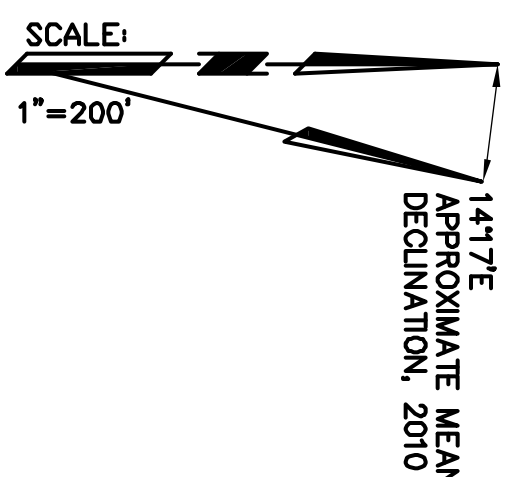
ANDREGG GEMANICS

**NOTES**

ALL FACILITIES AND FEATURES SHOWN HERE ON ARE PER DATA COLLECTED BY OTHERS.

**REFERENCE POINT COORDINATES**

NAD83 CALIFORNIA STATE PLANE COORDINATE SYSTEM ZONE II (CORS83, ZONE 2); U.S. SURVEY FEET



**EXHIBIT 'G' PROJECT 2079**

MIDDLE FORK AMERICAN RIVER PROJECT

HELL HOLE RESERVOIR PROJECT AREA

A PORTION OF SECTIONS 8, 9, 16, T.14 N., R.14 E., M.D.M.

PLACER COUNTY, CALIFORNIA

SCALE: 1"=200' FEBRUARY 11, 2011

**ANDREGG GEMANICS**

PROFESSIONAL LAND SURVEYOR

STATE OF CALIFORNIA

EXPIRES: 9/30/11

DATE

SHEET 19 OF 33